

School Yard

W
WHITES

School Yard, Fovant, SP3 5JY

Modern three-bedroom detached home in Fovant with efficient heating, spacious lounge, kitchen-diner, and low-maintenance garden. Available unfurnished for long-term rental.

- Popular village location
- Three bedrooms
- Spacious entrance hall
- Dining room
- Sitting room
- Fitted kitchen
- Utility/cloakroom
- En suite
- Heating via air source system
- Double open car barn

£1,575 PCM





About The Property

This beautifully designed modern three-bedroom detached family home is located in the highly sought-after village of Fovant. Built to a high standard, the property is well-insulated and features double-glazed windows along with an air source heat pump for increased efficiency.

The layout of the home includes a large entrance hall. To the right, you'll find a spacious lounge with large front windows and glass double doors that open onto the terrace of the rear garden. The lounge is further enhanced by a working log burner. Opposite the main lounge is a second reception room that is ideal as a home office or could serve as a fourth ground-floor bedroom. There is also a well-sized utility room, complete with space and plumbing for a washing machine, as well as a W/C and basin.

The generous kitchen-dining area features modern units, a ceramic hob and electric oven, space and plumbing for a dishwasher, and a designated area for a full-size free-standing fridge freezer. The kitchen also has ample room for a dining table and includes double glass French doors that lead out to the rear garden.

Upstairs, a spacious hallway, the large master double bedroom, which benefits from an ensuite featuring a full-sized thermostatic shower, W/C, and basin. The second bedroom is also a double and overlooks the rear garden, while the third bedroom is a single that could function well as a home office. The second and

third bedrooms share a family bathroom that includes a full-sized bath with a thermostatic shower.

Outside, the front of the property features a large lawn area with a paved pathway leading from the street to the front door. The rear boasts a low-maintenance terraced garden with a spacious patio that wraps around from the lounge to the kitchen, providing plenty of space for outdoor dining. Additionally, there is a well-proportioned shed and a small lawned area. The property also includes access to an open-fronted timber carport equipped with power and lighting.

With the combination of a modern air source heat pump and full double glazing, it is an efficient family home. It is offered unfurnished for a long-term rental.



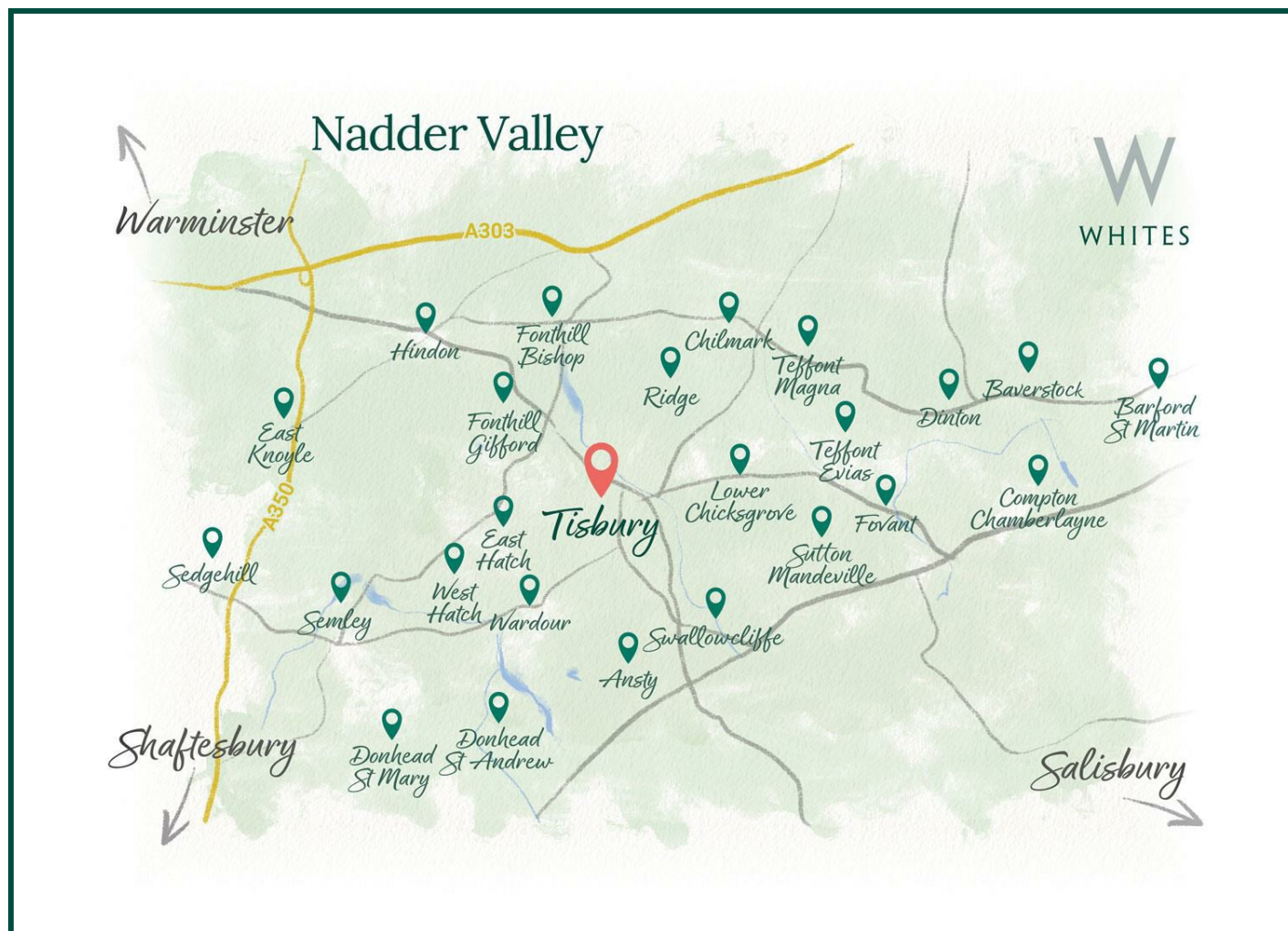


Location

Fovant is a characterful village set on the southern slopes of the Nadder Valley, within the Cranborne Chase National Landscape. Surrounded by meadows, chalk downs and ancient woodland, it offers a peaceful rural setting with a well-connected and active community.

The village is well served with everyday amenities including a shop and Post Office, GP surgery, pharmacy, and garage. A busy village hall hosts regular events and activities, and local news is shared through a monthly magazine and website. Fovant also benefits from a regular bus service and community-run transport.

Fovant is best known for its striking hillside Regimental Badges, carved into the chalk by soldiers during the First World War—a lasting and poignant piece of local heritage that continues to define its unique place in the landscape.



Key Information

Local Authority:

Wiltshire

Council Tax:

Band: E

Property Type:

House - Detached

Floor Area:



1252.00 sq ft

Let Available Date:

19th December 2025 NB: This date is provisional and will only be confirmed once referencing has been successfully

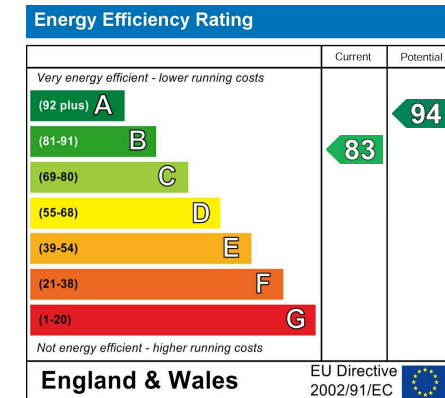
Furnish Type:

Unfurnished

Deposit:

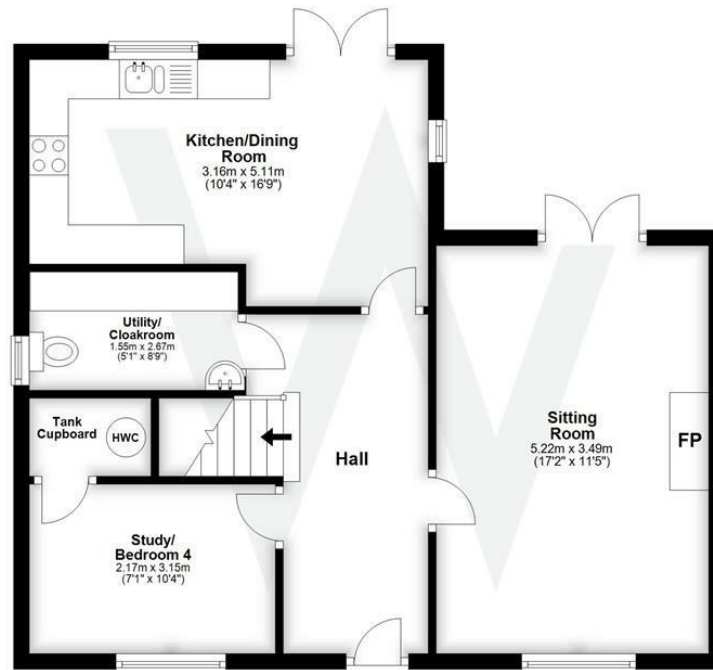
£1,817

EPC:



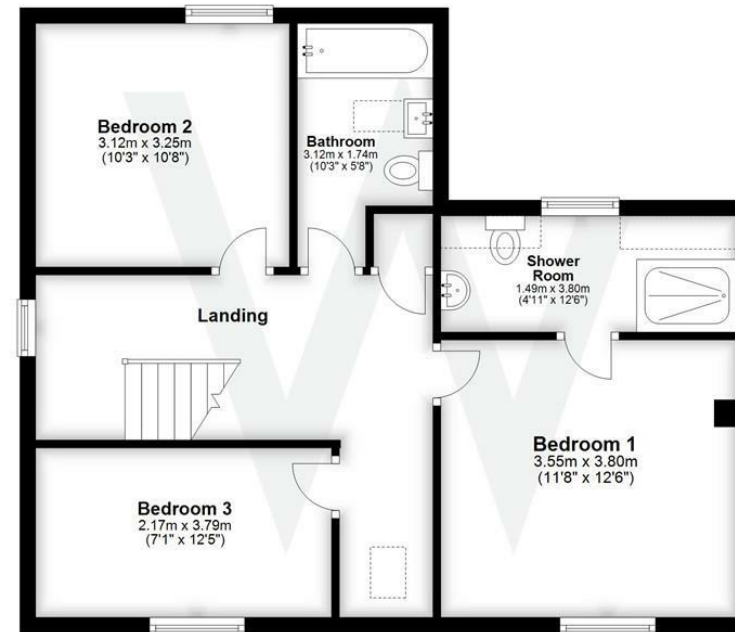
Ground Floor

Approx. 57.7 sq. metres (620.6 sq. feet)



First Floor

Approx. 58.7 sq. metres (631.7 sq. feet)



Total area: approx. 116.3 sq. metres (1252.3 sq. feet)